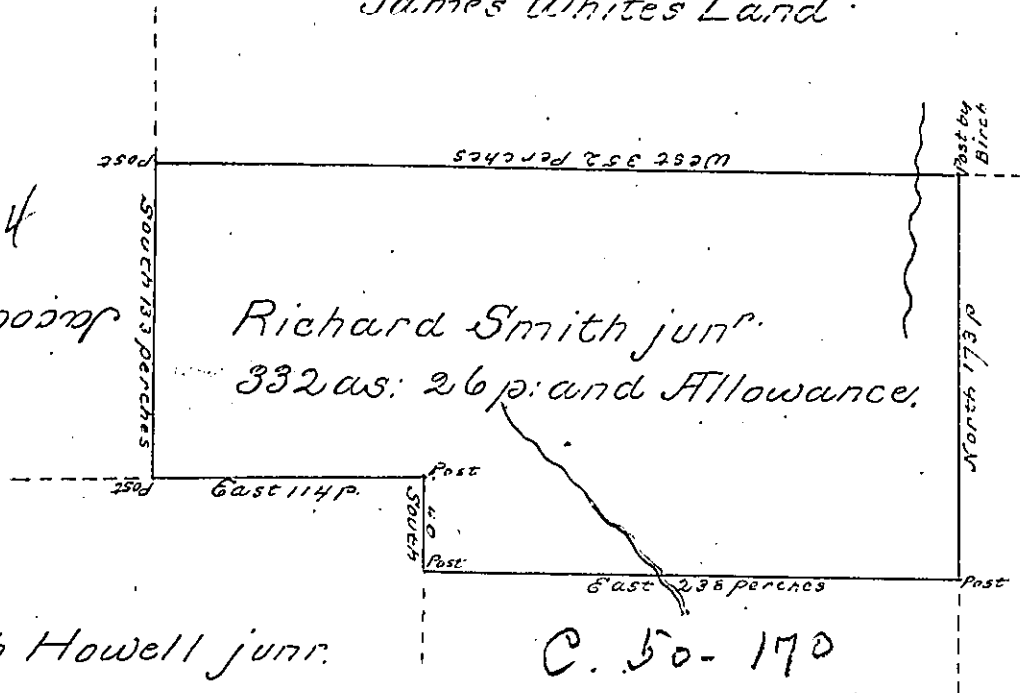


D. 13- 1767

James White's Land

A. 47- 14

Jacob S Howell



C. 79- 181

Joseph Howell junr.

C. 50- 170

Edward Evans

A. 47. 13

A Draught of a Tract of Land called Sugar Tree Grove (being part (061.) larger Tract of the same name) situate on the head of the lower Beaver D (061.) Branch of Clearfield Creek and the head of the S. E. Branch of Chest Creek (061.) Lands of Edward Evans Joseph Howell junr. Jacob S. Howell James White and William Holliday's Improvement 185 perches South from the S. W. corner of the Proprietaries Survey at the Chest in the County of Bedford containing three hundred and thirty two Acres 26 perches and the usual Allowance of six plant for Roads &c. Surveyed the 23d. and 24th. Days of June 1773 for Richard Smith junr. in pursuance of a Warrant granted to him the 13th. Day of May in the same year. by Thomas Smith D. S. To John Lukens Esqr. Surveyor General of Pennsylvania &c.

IN TESTIMONY that the above is a copy of the original remaining on file in the Department of Internal Affairs of Pennsylvania, made conformably to an Act of Assembly approved the 16th day of February, 1833, I have hereunto set my Hand and caused the Seal of said Department to be affixed at Harrisburg, this third day of July 1900

James W. Latta
Secretary of Internal Affairs.